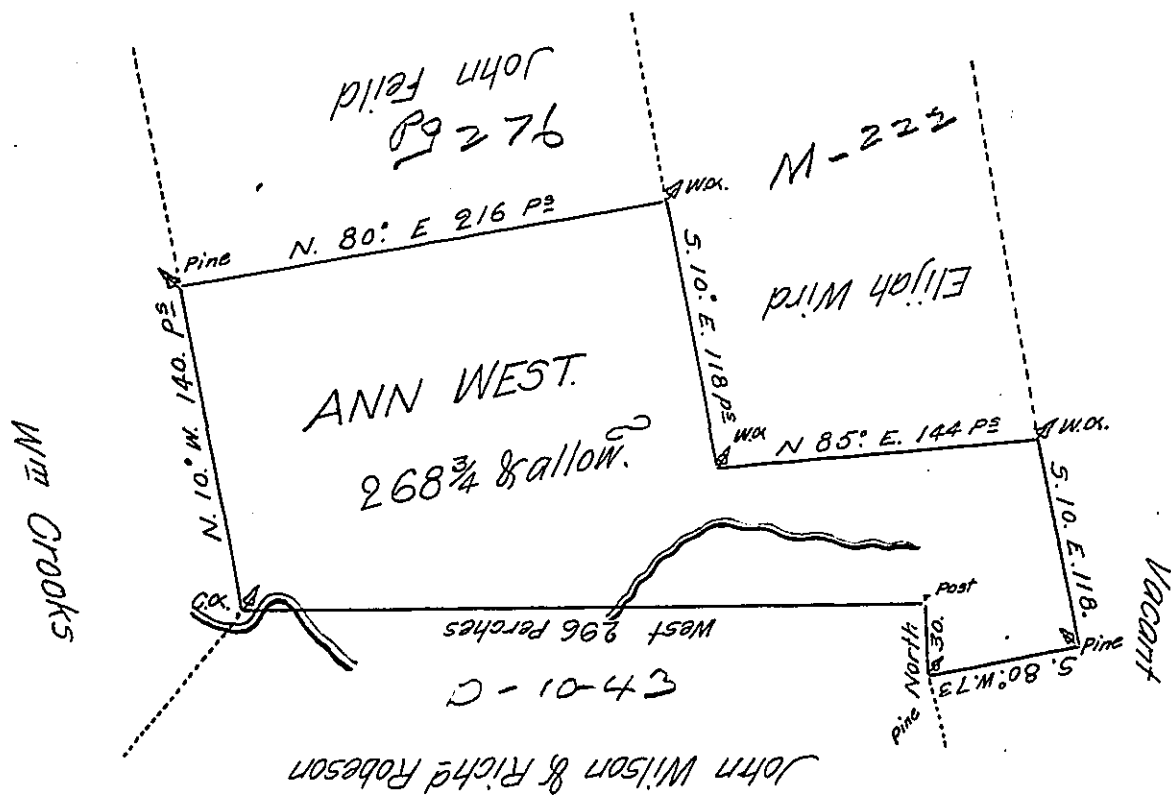


Pat 174-1742



A Draught of a Tract of land called Tipperara Situate on the Southerly Side of the North East Branch of Susquehanna River about Nine Miles above Fort Aug^a adjoining land formerly Surveyed to John Field in the County of Northumberland containing two hundred and Sixty Eight Acres and three quarters of an Acre besides the usual allowance of 6 P. Cent for Roads & th Surveyed the 22^d day of June 1773 for Ann West In Pursuance of an Order dated the 29th day of Aug^r 1769 N^o 3792.

Chas Stewart Dep. Sur.

To John Lukens Esq.

Survey. Gen.

IN TESTIMONY that the above is a copy of the original remaining on file in the Department of Internal Affairs of Pennsylvania, made conformably to an Act of Assembly approved the 16th day of February 1833, I have hereunto set my hand and caused the Seal of said Department to be affixed at Harrisburg, this eighteenth day of May 1907.

Henry Howard
Secretary of Internal Affairs.